

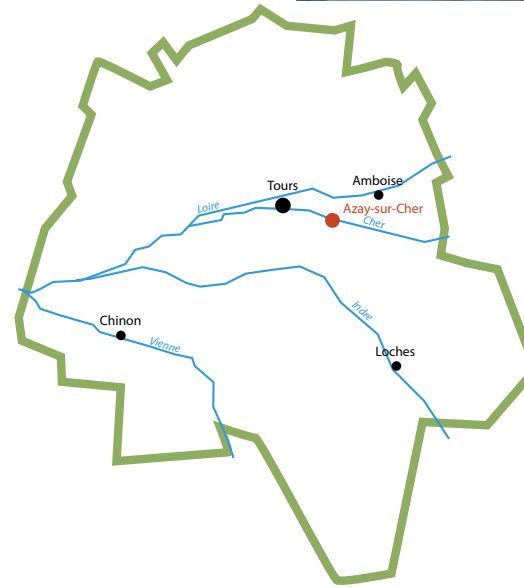
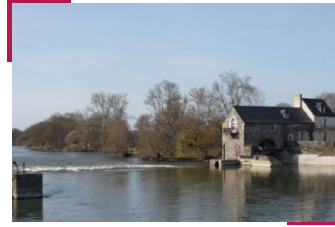
To see, to discover

Château de la Bourdaisière

Built in the 16th century, this chateau boasts a magnificent English style garden, a vegetable garden and the famous « Tomato Conservatory » with a range of 650 varieties.

Château de Nitray

Located near the village of Athée-sur-Cher, this château, built in the 15th and 19th centuries, is an exceptional piece of Renaissance architecture nestled in a 43-hectare park, a flower garden, a vegetable garden and a vineyard. The château is open to the public.



Walking charter

Cherish and respect nature. Listen to it, do not spoil it and do not harm it. Stay on the trail and be discreet. Do not damage plants or undergrowth. Do not smoke in the forest or do not light fires. Do not scare animals. Do not neglect human contact. Respect and get to know this rural world that welcomes you.

This material is funded by the Indre-et-Loire Council as part of the Footpath and Hiking Trail Regional Plan.

If you encounter any problem during the process of your walk, please inform us at sentinellesportsdenature.fr

Technical information

GPS DEPART N 47°35'11.2 E 0°8'49.68

DÉNIVELÉ + 32 m

Accommodation / Catering

Holidays rental, Bed and breakfast, Campsite,

Hotels in Loches and Beaulieu-lès-Loches

Restaurants

All shops available

Railway station.

Tourist-office of Loches

Chenonceaux Bléré Val de Cher

Bureau de Bléré

8 rue Jean Jacques Rousseau

Tél. 02 47 23 94 45

www.chenonceaux-blere-tourisme.com

chenonceauxbleretourisme@gmail.com

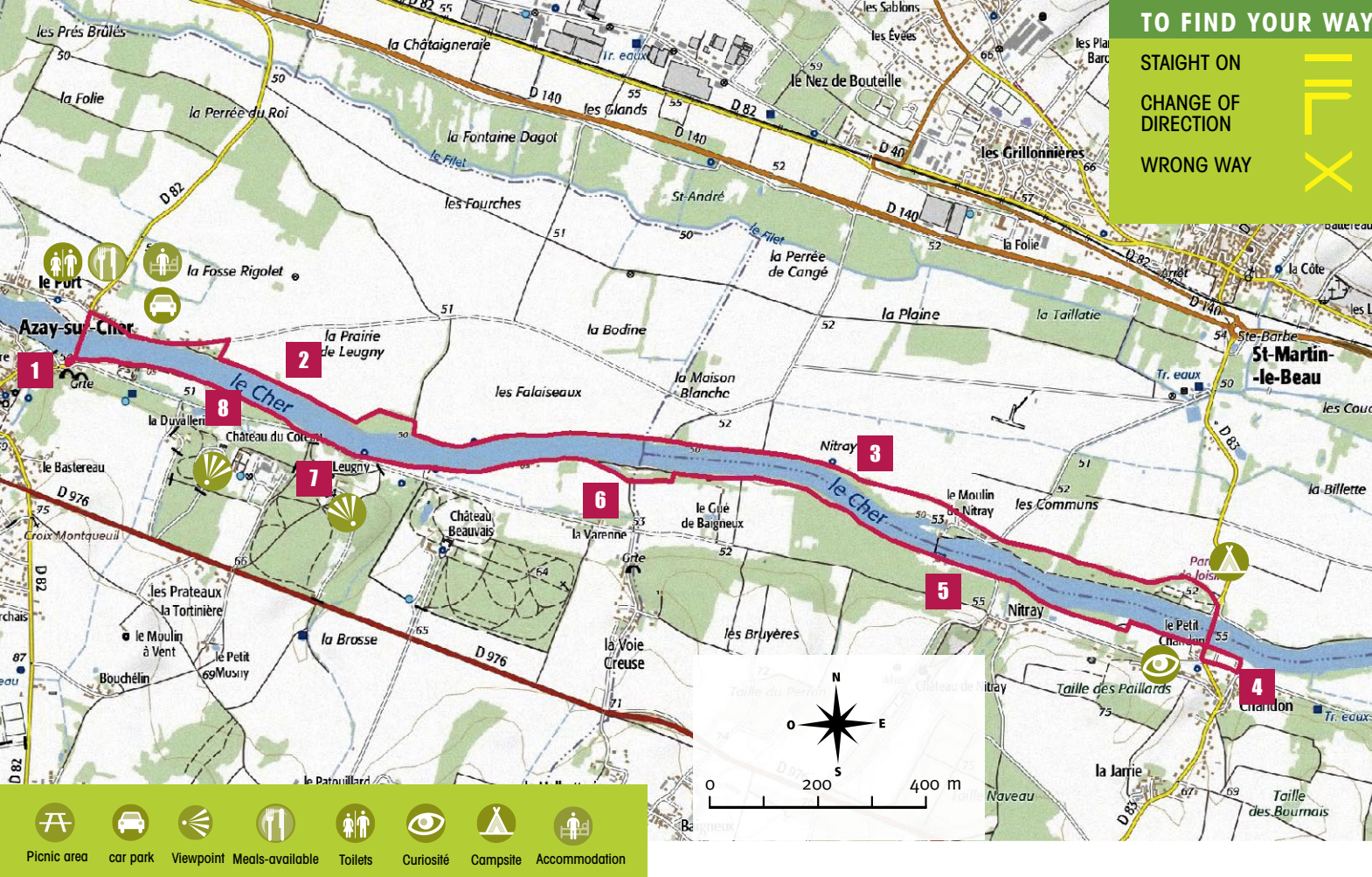


Hiking
NATURE - HERITAGE


Water through the centuries in the Cher valley

Azay-sur-Cher

2h30 - 10km - Easy



TO FIND YOUR WAY

STRAIGHT ON 

CHANGE OF DIRECTION 

WRONG WAY 

4

Chandon port

On the other side of the bridge, before going right to return to Azay, be sure to make a quick detour to the left to visit the 19th century port de chandon. It is the home port of the Valchantrau toue cabanée, a type of riverboat with a wooden hut used by fishermen. These traditional Loire boats were used to transport people and goods

5

Nitray dam

You are now on the left bank of the river Cher. **The Nitray dam** is in front of you. Built in 1841, the site comprises a mobile needle dam, a spillway, a one-stage lock and a lock-keeper's house which originally housed two separate lodgings. The dam consists of retractable wooden beams which allow water level to be raised to make the river navigable in any season. The one-stage lock is closed by wooden mitre gates.

6

Voie Creuse

The voie creuse which you are on dates from the Celtic Gaul period. From this road you will see the three chateaus which overlook the valley. The first of these, the château de Beauvais, was owned by Senator Clément de Ris, whose kidnapping, on the evening of the 23rd of September 1800, inspired Honoré de Balzac in his novel Une ténébreuse affaire (A Murky Business). General de Gaulle also stayed here in 1940

7

Château de Leugny

A bit further on, you will see the **château de Leugny** which was rebuilt in 1779 to the plans of a student of the famous architect Gabriel. The facades, the roofs and the park have been listed as historic monuments since 1962

8

Château de Coteau

Lastly you will be able to admire the **château du Coteau** which boasts three Gallo-Roman arcades and the ruins of the Fontenay aqueduct which supplied the city of Tours with drinking water. Continue alongside the river Cher, then, past the fitness trail, finish your ramble by crossing over the bridge to get back to your starting point

1

Place Besnard

The 7.5 km yellow waymarked circuit starts within the royal city of Loches, from the Baschet park opposite the keep. The medieval fortress, which served as a prison until 1926, is now owned by the Conseil departemental d'Indre-et-Loire. From this rocky outcrop you can see the area known as Les Prairies du Roy which you will cross to get to Beaulieu-lès-Loches.

2

Cher river

Cross the bridge over the river Cher then take the second road on the right to get to the river bank which you now follow for several kilometres. On your left you pass fields of grain and pastures. Here, and throughout the Cher valley, numerous prehistoric ruins and the proximity of the Tours-Bourges roman road are signs of a very ancient human existence.

3

Nitray mill

The path will take you close to **the Nitray water mill** in the village of Saint-Martin-le-Beau. Built in the 14th century, it belonged to the Nitray seigniory. In the 19th century, a file shaper used the mill to stretch out steel. Privately owned, the building, constructed on a little island, was recently restored and equipped with a new waterwheel.

 Picnic area
  car park
  Viewpoint
  Meals-available
  Toilets
  Curiosité
  Campsite
  Accommodation

Between the left and the right banks of the river, this rumble runs alongside the river Cher, offering the chance to discover an exceptional natural and historic environment boasting a mill, ports, a dam and castles.